

P1P Short Build Compact Cylinders

According to ISO 21287



The P1P Series is a complete range of ISO 21287 compact cylinders developed to meet the highest requirements for quality and performance. The careful design in every detail provides first class function and service life properties.

Reliability and long service life are key qualities of any pneumatic cylinder. Therefore we have given P1P highest possible quality in every detail based on our 40 years of experience and extensive testing. The design is based on the following important principles.

- **Proven seal design and materials throughout the cylinder. The expertise for seal technology within Parker Hannifin is the basis for leading and proven tribology solutions for all our pneumatic actuators.**
- **Body extrusion in anodised aluminium with extra fine and hard internal surface for optimum operational conditions.**
- **End covers and body extrusion with external anodisation for excellent corrosion resistance.**
- **Stainless steel piston rod for versatile use in corrosive environment.**

Double acting

The versatile high quality ISO compact cylinder range, P1P cylinders are up to 50% shorter than ISO15552 cylinders for the same stroke. Suitable for a wide range of applications.

Double acting - Guided

This cylinder version feature twin guide rods connected to the piston rod by a large flange plate. These cylinders are ideal for clamping an moving applications where turning of the piston rod must be avoided.

- Bore 20 - 100 mm
- ISO 21287 conformity
- Corrosion resistant design and low weight construction
- Magnetic piston as standard
- Elastic cushioning
- Flexible direct mounting
- ISO 15552 mountings and global sensor range common with P1D



Operating information

| | |
|---|----------------------------------|
| Working pressure: | Max 10 bar |
| Permissible fluid: | Air, with or without lubrication |
| Seals / Temperature options | |
| Standard: | -20°C to +80°C |
| High temperature: | -10°C to +120°C |
| Low temperature: | -40°C to +80°C |
| Prelubricated, further lubrication is not normally necessary. If additional lubrication is introduced it must be continued. | |
| For more information see www.parker.com/euro_pneumatic | |

* Double acting - Guided order code.

Place **G** in position **4** of the order code

Example: P1P**G**020DS7G0025

Double acting - Female threaded piston rod

Ø20mm - (M5)

| Stroke mm | Order code |
|-----------|--------------------------|
| 5 | P1P S 020DS7G0005 |
| 10 | P1P S 020DS7G0010 |
| 15 | P1P S 020DS7G0015 |
| 20 | P1P S 020DS7G0020 |
| 25 | P1P S 020DS7G0025 |
| 30 | P1P S 020DS7G0030 |
| 40 | P1P S 020DS7G0040 |
| 50 | P1P S 020DS7G0050 |
| 60 | P1P S 020DS7G0060 |

Ø25mm - (M5)

| Stroke mm | Order code |
|-----------|--------------------------|
| 5 | P1P S 025DS7G0005 |
| 10 | P1P S 025DS7G0010 |
| 15 | P1P S 025DS7G0015 |
| 20 | P1P S 025DS7G0020 |
| 25 | P1P S 025DS7G0025 |
| 30 | P1P S 025DS7G0030 |
| 40 | P1P S 025DS7G0040 |
| 50 | P1P S 025DS7G0050 |
| 60 | P1P S 025DS7G0060 |

Ø32mm - (G1/8)

| Stroke mm | Order code |
|-----------|--------------------------|
| 5 | P1P S 032DS7G0005 |
| 10 | P1P S 032DS7G0010 |
| 15 | P1P S 032DS7G0015 |
| 20 | P1P S 032DS7G0020 |
| 25 | P1P S 032DS7G0025 |
| 30 | P1P S 032DS7G0030 |
| 40 | P1P S 032DS7G0040 |
| 50 | P1P S 032DS7G0050 |
| 60 | P1P S 032DS7G0060 |
| 80 | P1P S 032DS7G0080 |

Ø40mm - (G1/8)

| Stroke mm | Order code |
|-----------|--------------------------|
| 5 | P1P S 040DS7G0005 |
| 10 | P1P S 040DS7G0010 |
| 15 | P1P S 040DS7G0015 |
| 20 | P1P S 040DS7G0020 |
| 25 | P1P S 040DS7G0025 |
| 30 | P1P S 040DS7G0030 |
| 40 | P1P S 040DS7G0040 |
| 50 | P1P S 040DS7G0050 |
| 60 | P1P S 040DS7G0060 |
| 80 | P1P S 040DS7G0080 |

Ø50mm - (G1/8)

| Stroke mm | Order code |
|-----------|--------------------------|
| 5 | P1P S 050DS7G0005 |
| 10 | P1P S 050DS7G0010 |
| 15 | P1P S 050DS7G0015 |
| 20 | P1P S 050DS7G0020 |
| 25 | P1P S 050DS7G0025 |
| 30 | P1P S 050DS7G0030 |
| 40 | P1P S 050DS7G0040 |
| 50 | P1P S 050DS7G0050 |
| 60 | P1P S 050DS7G0060 |
| 80 | P1P S 050DS7G0080 |

Ø63mm - (G1/8)

| Stroke mm | Order code |
|-----------|--------------------------|
| 5 | P1P S 063DS7G0005 |
| 10 | P1P S 063DS7G0010 |
| 15 | P1P S 063DS7G0015 |
| 20 | P1P S 063DS7G0020 |
| 25 | P1P S 063DS7G0025 |
| 30 | P1P S 063DS7G0030 |
| 40 | P1P S 063DS7G0040 |
| 50 | P1P S 063DS7G0050 |
| 60 | P1P S 063DS7G0060 |
| 80 | P1P S 063DS7G0080 |

Ø80mm - (G1/8)

| Stroke mm | Order code |
|-----------|--------------------------|
| 5 | P1P S 080DS7G0005 |
| 10 | P1P S 080DS7G0010 |
| 15 | P1P S 080DS7G0015 |
| 20 | P1P S 080DS7G0020 |
| 25 | P1P S 080DS7G0025 |
| 30 | P1P S 080DS7G0030 |
| 40 | P1P S 080DS7G0040 |
| 50 | P1P S 080DS7G0050 |
| 60 | P1P S 080DS7G0060 |
| 80 | P1P S 080DS7G0080 |
| 100 | P1P S 080DS7G0100 |

Ø100mm - (G1/8)

| Stroke mm | Order code |
|-----------|--------------------------|
| 10 | P1P S 100DS7G0010 |
| 15 | P1P S 100DS7G0015 |
| 20 | P1P S 100DS7G0020 |
| 25 | P1P S 100DS7G0025 |
| 30 | P1P S 100DS7G0030 |
| 40 | P1P S 100DS7G0040 |
| 50 | P1P S 100DS7G0050 |
| 60 | P1P S 100DS7G0060 |
| 80 | P1P S 100DS7G0080 |
| 100 | P1P S 100DS7G0100 |

Sensors



For sensors see page 77.

Double acting

The versatile high quality ISO compact cylinder range, P1P cylinders are up to 50% shorter than ISO15552 cylinders for the same stroke. Suitable for a wide range of applications.

- Bore 20 - 100 mm
- ISO 21287 conformity
- Corrosion resistant design and low weight construction
- Magnetic piston as standard
- Elastic cushioning
- Flexible direct mounting
- ISO 15552 mountings and global sensor range common with P1D



Double acting - Male threaded piston rod

Ø20mm - (M5)

| Stroke mm | Order code |
|-----------|-----------------|
| 5 | P1PS020DS8G0005 |
| 10 | P1PS020DS8G0010 |
| 15 | P1PS020DS8G0015 |
| 20 | P1PS020DS8G0020 |
| 25 | P1PS020DS8G0025 |
| 30 | P1PS020DS8G0030 |
| 40 | P1PS020DS8G0040 |
| 50 | P1PS020DS8G0050 |
| 60 | P1PS020DS8G0060 |

Ø25mm - (M5)

| Stroke mm | Order code |
|-----------|-----------------|
| 5 | P1PS025DS8G0005 |
| 10 | P1PS025DS8G0010 |
| 15 | P1PS025DS8G0015 |
| 20 | P1PS025DS8G0020 |
| 25 | P1PS025DS8G0025 |
| 30 | P1PS025DS8G0030 |
| 40 | P1PS025DS8G0040 |
| 50 | P1PS025DS8G0050 |
| 60 | P1PS025DS8G0060 |

Ø32mm - (G1/8)

| Stroke mm | Order code |
|-----------|-----------------|
| 5 | P1PS032DS8G0005 |
| 10 | P1PS032DS8G0010 |
| 15 | P1PS032DS8G0015 |
| 20 | P1PS032DS8G0020 |
| 25 | P1PS032DS8G0025 |
| 30 | P1PS032DS8G0030 |
| 40 | P1PS032DS8G0040 |
| 50 | P1PS032DS8G0050 |
| 60 | P1PS032DS8G0060 |
| 80 | P1PS032DS8G0080 |

Ø40mm - (G1/8)

| Stroke mm | Order code |
|-----------|-----------------|
| 5 | P1PS040DS8G0005 |
| 10 | P1PS040DS8G0010 |
| 15 | P1PS040DS8G0015 |
| 20 | P1PS040DS8G0020 |
| 25 | P1PS040DS8G0025 |
| 30 | P1PS040DS8G0030 |
| 40 | P1PS040DS8G0040 |
| 50 | P1PS040DS8G0050 |
| 60 | P1PS040DS8G0060 |
| 80 | P1PS040DS8G0080 |

Ø50mm - (G1/8)

| Stroke mm | Order code |
|-----------|-----------------|
| 5 | P1PS050DS8G0005 |
| 10 | P1PS050DS8G0010 |
| 15 | P1PS050DS8G0015 |
| 20 | P1PS050DS8G0020 |
| 25 | P1PS050DS8G0025 |
| 30 | P1PS050DS8G0030 |
| 40 | P1PS050DS8G0040 |
| 50 | P1PS050DS8G0050 |
| 60 | P1PS050DS8G0060 |
| 80 | P1PS050DS8G0080 |

Ø63mm - (G1/8)

| Stroke mm | Order code |
|-----------|-----------------|
| 5 | P1PS063DS8G0005 |
| 10 | P1PS063DS8G0010 |
| 15 | P1PS063DS8G0015 |
| 20 | P1PS063DS8G0020 |
| 25 | P1PS063DS8G0025 |
| 30 | P1PS063DS8G0030 |
| 40 | P1PS063DS8G0040 |
| 50 | P1PS063DS8G0050 |
| 60 | P1PS063DS8G0060 |
| 80 | P1PS063DS8G0080 |

Ø80mm - (G1/8)

| Stroke mm | Order code |
|-----------|-----------------|
| 5 | P1PS080DS8G0005 |
| 10 | P1PS080DS8G0010 |
| 15 | P1PS080DS8G0015 |
| 20 | P1PS080DS8G0020 |
| 25 | P1PS080DS8G0025 |
| 30 | P1PS080DS8G0030 |
| 40 | P1PS080DS8G0040 |
| 50 | P1PS080DS8G0050 |
| 60 | P1PS080DS8G0060 |
| 80 | P1PS080DS8G0080 |
| 100 | P1PS080DS8G0100 |

Ø100mm - (G1/8)

| Stroke mm | Order code |
|-----------|-----------------|
| 10 | P1PS100DS8G0010 |
| 15 | P1PS100DS8G0015 |
| 20 | P1PS100DS8G0020 |
| 25 | P1PS100DS8G0025 |
| 30 | P1PS100DS8G0030 |
| 40 | P1PS100DS8G0040 |
| 50 | P1PS100DS8G0050 |
| 60 | P1PS100DS8G0060 |
| 80 | P1PS100DS8G0080 |
| 100 | P1PS100DS8G0100 |

Sensors



For sensors see page 77.

Single acting

Single acting P1P cylinders are available in bore sizes 20 - 63 mm and in two versions to suit a wide range of applications. Choose between the spring return (SS) and the spring extended (TS) versions.



*** Spring return order code.**

Place **S** in position **8** of the order code

Example: P1PS020**S**S7G0025

*** Spring extended order code.**

Place **T** in position **8** of the order code

Example: P1PS020**T**S7G0025

Single acting - Female threaded piston rod

Ø20mm - (M5)

| Stroke mm | Order code |
|-----------|-------------------|
| 25 | P1PS020 * S7G0025 |

Ø25mm - (M5)

| Stroke mm | Order code |
|-----------|-------------------|
| 25 | P1PS025 * S7G0025 |

Ø32mm - (G1/8)

| Stroke mm | Order code |
|-----------|-------------------|
| 25 | P1PS032 * S7G0025 |

Ø40mm - (G1/8)

| Stroke mm | Order code |
|-----------|-------------------|
| 25 | P1PS040 * S7G0025 |

Ø50mm - (G1/8)

| Stroke mm | Order code |
|-----------|-------------------|
| 25 | P1PS050 * S7G0025 |

Ø63mm - (G1/8)

| Stroke mm | Order code |
|-----------|-------------------|
| 25 | P1PS063 * S7G0025 |

Double acting - Through piston rod

The P1P through rod cylinder version is available in bore sizes 20 - 100 mm. This cylinder type is used in many ways e.g. in applications with higher lateral forces or when performing a movement on both sides of the cylinder.



Double acting - Through piston rod - Female threaded piston rod

Ø20mm - (M5)

| Stroke mm | Order code |
|-----------|-----------------|
| 5 | P1PS020KS7G0005 |
| 10 | P1PS020KS7G0010 |
| 15 | P1PS020KS7G0015 |
| 20 | P1PS020KS7G0020 |
| 25 | P1PS020KS7G0025 |
| 30 | P1PS020KS7G0030 |
| 40 | P1PS020KS7G0040 |
| 50 | P1PS020KS7G0050 |
| 60 | P1PS020KS7G0060 |

Ø25mm - (M5)

| Stroke mm | Order code |
|-----------|-----------------|
| 5 | P1PS025KS7G0005 |
| 10 | P1PS025KS7G0010 |
| 15 | P1PS025KS7G0015 |
| 20 | P1PS025KS7G0020 |
| 25 | P1PS025KS7G0025 |
| 30 | P1PS025KS7G0030 |
| 40 | P1PS025KS7G0040 |
| 50 | P1PS025KS7G0050 |
| 60 | P1PS025KS7G0060 |

Ø32mm - (G1/8)

| Stroke mm | Order code |
|-----------|-----------------|
| 5 | P1PS032KS7G0005 |
| 10 | P1PS032KS7G0010 |
| 15 | P1PS032KS7G0015 |
| 20 | P1PS032KS7G0020 |
| 25 | P1PS032KS7G0025 |
| 30 | P1PS032KS7G0030 |
| 40 | P1PS032KS7G0040 |
| 50 | P1PS032KS7G0050 |
| 60 | P1PS032KS7G0060 |
| 80 | P1PS032KS7G0080 |

Ø40mm - (G1/8)

| Stroke mm | Order code |
|-----------|-----------------|
| 5 | P1PS040KS7G0005 |
| 10 | P1PS040KS7G0010 |
| 15 | P1PS040KS7G0015 |
| 20 | P1PS040KS7G0020 |
| 25 | P1PS040KS7G0025 |
| 30 | P1PS040KS7G0030 |
| 40 | P1PS040KS7G0040 |
| 50 | P1PS040KS7G0050 |
| 60 | P1PS040KS7G0060 |
| 80 | P1PS040KS7G0080 |

Ø50mm - (G1/8)

| Stroke mm | Order code |
|-----------|-----------------|
| 5 | P1PS050KS7G0005 |
| 10 | P1PS050KS7G0010 |
| 15 | P1PS050KS7G0015 |
| 20 | P1PS050KS7G0020 |
| 25 | P1PS050KS7G0025 |
| 30 | P1PS050KS7G0030 |
| 40 | P1PS050KS7G0040 |
| 50 | P1PS050KS7G0050 |
| 60 | P1PS050KS7G0060 |
| 80 | P1PS050KS7G0080 |

Ø63mm - (G1/8)

| Stroke mm | Order code |
|-----------|-----------------|
| 5 | P1PS063KS7G0005 |
| 10 | P1PS063KS7G0010 |
| 15 | P1PS063KS7G0015 |
| 20 | P1PS063KS7G0020 |
| 25 | P1PS063KS7G0025 |
| 30 | P1PS063KS7G0030 |
| 40 | P1PS063KS7G0040 |
| 50 | P1PS063KS7G0050 |
| 60 | P1PS063KS7G0060 |
| 80 | P1PS063KS7G0080 |

Ø80mm - (G1/8)

| Stroke mm | Order code |
|-----------|-----------------|
| 5 | P1PS080KS7G0005 |
| 10 | P1PS080KS7G0010 |
| 15 | P1PS080KS7G0015 |
| 20 | P1PS080KS7G0020 |
| 25 | P1PS080KS7G0025 |
| 30 | P1PS080KS7G0030 |
| 40 | P1PS080KS7G0040 |
| 50 | P1PS080KS7G0050 |
| 60 | P1PS080KS7G0060 |
| 80 | P1PS080KS7G0080 |
| 100 | P1PS080KS7G0100 |

Ø100mm - (G1/8)

| Stroke mm | Order code |
|-----------|-----------------|
| 10 | P1PS100KS7G0010 |
| 15 | P1PS100KS7G0015 |
| 20 | P1PS100KS7G0020 |
| 25 | P1PS100KS7G0025 |
| 30 | P1PS100KS7G0030 |
| 40 | P1PS100KS7G0040 |
| 50 | P1PS100KS7G0050 |
| 60 | P1PS100KS7G0060 |
| 80 | P1PS100KS7G0080 |
| 100 | P1PS100KS7G0100 |

Sensors



For sensors see page 77.

Double acting - Low temperature

This P1P cylinder version is developed for use in temperatures down to -40°C. It is available in bore sizes 20 - 100 mm. With the combination of compactness and corrosion resistance the P1P low temperature version can be used in many industries e.g. Bus, Truck and Rail applications.

*** Low temperature order code.**

Place **L** in position **9** of the order code

Example: P1PS020D**L**7G0005



Double acting - High temperature

Use this P1P cylinder version, available in bore sizes 20 - 100 mm, for high temperature applications with temperatures up to +120°C. The chemical resistance thanks to the design in anodised aluminium is an advantage in many high temperature applications.

*** High temperature order code.**

Place **F** in position **9** of the order code

Example: P1PS020D**F**7G0005



Double acting - Female threaded piston rod

Ø20mm - (M5)

| Stroke mm | Order code |
|-----------|-------------------|
| 5 | P1PS020D * 7G0005 |
| 10 | P1PS020D * 7G0010 |
| 15 | P1PS020D * 7G0015 |
| 20 | P1PS020D * 7G0020 |
| 25 | P1PS020D * 7G0025 |
| 30 | P1PS020D * 7G0030 |
| 40 | P1PS020D * 7G0040 |
| 50 | P1PS020D * 7G0050 |
| 60 | P1PS020D * 7G0060 |

Ø25mm - (M5)

| Stroke mm | Order code |
|-----------|-------------------|
| 5 | P1PS025D * 7G0005 |
| 10 | P1PS025D * 7G0010 |
| 15 | P1PS025D * 7G0015 |
| 20 | P1PS025D * 7G0020 |
| 25 | P1PS025D * 7G0025 |
| 30 | P1PS025D * 7G0030 |
| 40 | P1PS025D * 7G0040 |
| 50 | P1PS025D * 7G0050 |
| 60 | P1PS025D * 7G0060 |

Ø32mm - (G1/8)

| Stroke mm | Order code |
|-----------|-------------------|
| 5 | P1PS032D * 7G0005 |
| 10 | P1PS032D * 7G0010 |
| 15 | P1PS032D * 7G0015 |
| 20 | P1PS032D * 7G0020 |
| 25 | P1PS032D * 7G0025 |
| 30 | P1PS032D * 7G0030 |
| 40 | P1PS032D * 7G0040 |
| 50 | P1PS032D * 7G0050 |
| 60 | P1PS032D * 7G0060 |
| 80 | P1PS032D * 7G0080 |

Ø40mm - (G1/8)

| Stroke mm | Order code |
|-----------|-------------------|
| 5 | P1PS040D * 7G0005 |
| 10 | P1PS040D * 7G0010 |
| 15 | P1PS040D * 7G0015 |
| 20 | P1PS040D * 7G0020 |
| 25 | P1PS040D * 7G0025 |
| 30 | P1PS040D * 7G0030 |
| 40 | P1PS040D * 7G0040 |
| 50 | P1PS040D * 7G0050 |
| 60 | P1PS040D * 7G0040 |
| 80 | P1PS040D * 7G0050 |

Ø50mm - (G1/8)

| Stroke mm | Order code |
|-----------|-------------------|
| 5 | P1PS050D * 7G0005 |
| 10 | P1PS050D * 7G0010 |
| 15 | P1PS050D * 7G0015 |
| 20 | P1PS050D * 7G0020 |
| 25 | P1PS050D * 7G0025 |
| 30 | P1PS050D * 7G0030 |
| 40 | P1PS050D * 7G0040 |
| 50 | P1PS050D * 7G0050 |
| 60 | P1PS050D * 7G0060 |
| 80 | P1PS050D * 7G0080 |

Ø63mm - (G1/8)

| Stroke mm | Order code |
|-----------|-------------------|
| 5 | P1PS063D * 7G0005 |
| 10 | P1PS063D * 7G0010 |
| 15 | P1PS063D * 7G0015 |
| 20 | P1PS063D * 7G0020 |
| 25 | P1PS063D * 7G0025 |
| 30 | P1PS063D * 7G0030 |
| 40 | P1PS063D * 7G0040 |
| 50 | P1PS063D * 7G0050 |
| 60 | P1PS063D * 7G0060 |
| 80 | P1PS063D * 7G0080 |

Ø80mm - (G1/8)

| Stroke mm | Order code |
|-----------|-------------------|
| 5 | P1PS080D * 7G0005 |
| 10 | P1PS080D * 7G0010 |
| 15 | P1PS080D * 7G0015 |
| 20 | P1PS080D * 7G0020 |
| 25 | P1PS080D * 7G0025 |
| 30 | P1PS080D * 7G0030 |
| 40 | P1PS080D * 7G0040 |
| 50 | P1PS080D * 7G0050 |
| 60 | P1PS080D * 7G0060 |
| 80 | P1PS080D * 7G0080 |
| 100 | P1PS080D * 7G0100 |

Ø100mm - (G1/8)

| Stroke mm | Order code |
|-----------|-------------------|
| 10 | P1PS100D * 7G0010 |
| 15 | P1PS100D * 7G0015 |
| 20 | P1PS100D * 7G0020 |
| 25 | P1PS100D * 7G0025 |
| 30 | P1PS100D * 7G0030 |
| 40 | P1PS100D * 7G0040 |
| 50 | P1PS100D * 7G0050 |
| 60 | P1PS100D * 7G0060 |
| 80 | P1PS100D * 7G0080 |
| 100 | P1PS100D * 7G0100 |

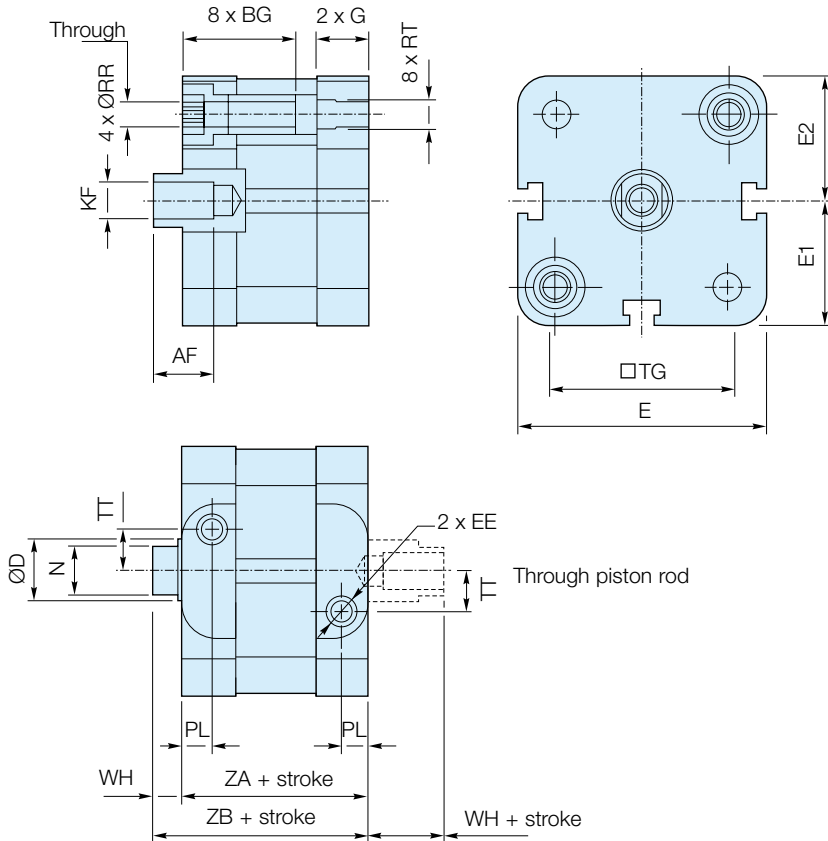
Sensors
Low temperature only



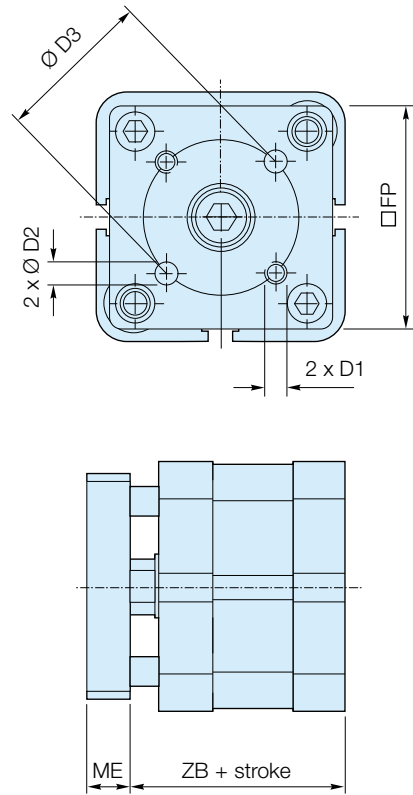
For sensors see page 77.

Dimensions - Bore 20 - 63mm

P1PS...DS7G Double acting with female piston rod thread

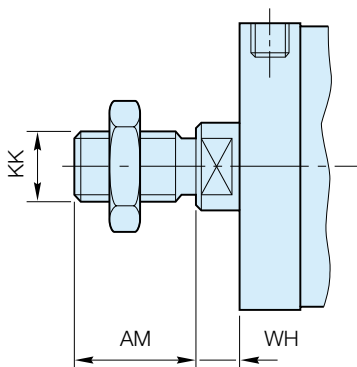


P1PG...DS Double acting with guided piston rod



| Bore size | AF min | BG min | ØD | D1 | ØD2 H8 | ØD3 | EE | E | E1 | E2 | FP | G | KF | ME | N h14 | PL | ØRR min | RT | TG | TT | WH | ZA ± 0,3 | ZB ± 0,6 |
|-----------|--------|--------|----|----|--------|-----|------|------|------|------|----|-------|-----|----|-------|-----|---------|----|------|------|----|----------|----------|
| Ø20 | 10 | 15 | 10 | M4 | 4 | 17 | M5 | 38,0 | 19,0 | 19,1 | 35 | 11,60 | M6 | 8 | 8 | 7,6 | 4,1 | M5 | 22,0 | 4,0 | 6 | 37 | 43 |
| Ø25 | 10 | 15 | 10 | M5 | 5 | 22 | M5 | 41,0 | 20,5 | 20,6 | 38 | 11,90 | M6 | 8 | 8 | 7,5 | 4,1 | M5 | 26,0 | 5,5 | 6 | 39 | 45 |
| Ø32 | 12 | 16 | 12 | M5 | 5 | 28 | G1/8 | 49,4 | 24,7 | 24,9 | 45 | 15,25 | M8 | 10 | 10 | 7,8 | 5,1 | M6 | 32,5 | 6,5 | 7 | 44 | 51 |
| Ø40 | 12 | 16 | 12 | M5 | 5 | 33 | G1/8 | 56,0 | 28,0 | 28,5 | 50 | 15,25 | M8 | 10 | 10 | 8,0 | 5,1 | M6 | 38,0 | 8,0 | 7 | 45 | 52 |
| Ø50 | 16 | 16 | 16 | M6 | 6 | 42 | G1/8 | 67,0 | 33,5 | 33,7 | 60 | 14,30 | M10 | 12 | 13 | 7,7 | 6,4 | M8 | 46,5 | 11,0 | 8 | 45 | 53 |
| Ø63 | 16 | 16 | 16 | M6 | 6 | 50 | G1/8 | 79,0 | 39,5 | 39,8 | 70 | 16,30 | M10 | 12 | 13 | 8,0 | 6,4 | M8 | 56,5 | 16,0 | 8 | 49 | 57 |

P1PS...DS8G Double acting with male piston rod thread

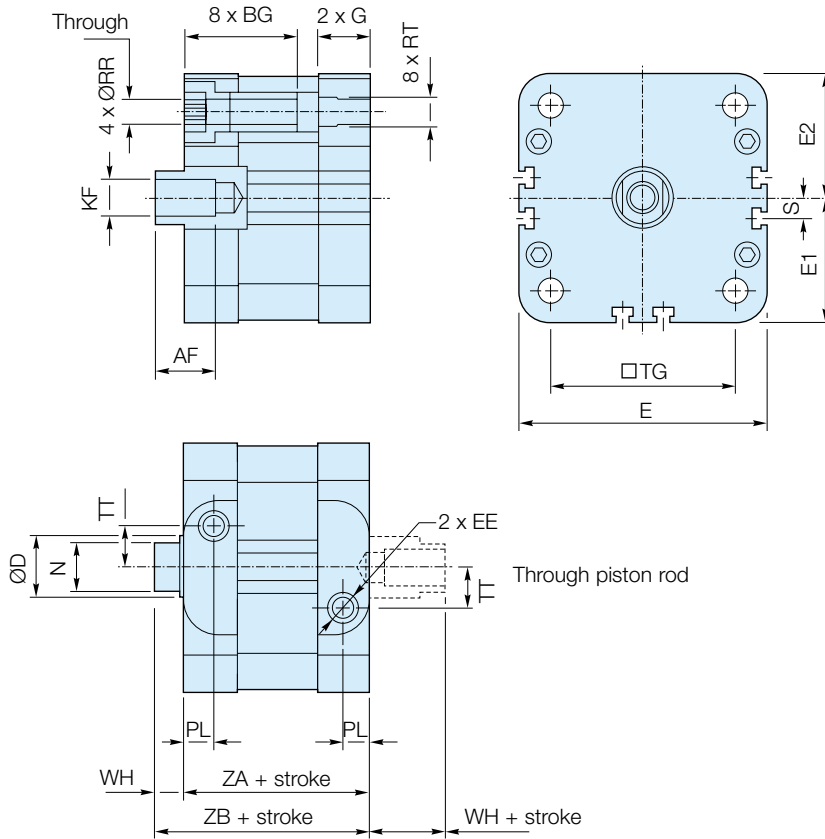


| Bore size | AM +0 -0.5 | WH | | KK |
|-----------|------------|------|-------|------------|
| | | nom. | tol. | |
| Ø20 | 16 | 6 | ± 1,6 | M8 x 1,25 |
| Ø25 | 16 | 6 | ± 1,6 | M8 x 1,25 |
| Ø32 | 19 | 7 | ± 1,6 | M10 x 1,25 |
| Ø40 | 19 | 7 | ± 1,6 | M10 x 1,25 |
| Ø50 | 22 | 8 | ± 1,6 | M12 x 1,25 |
| Ø63 | 22 | 8 | ± 1,6 | M12 x 1,25 |

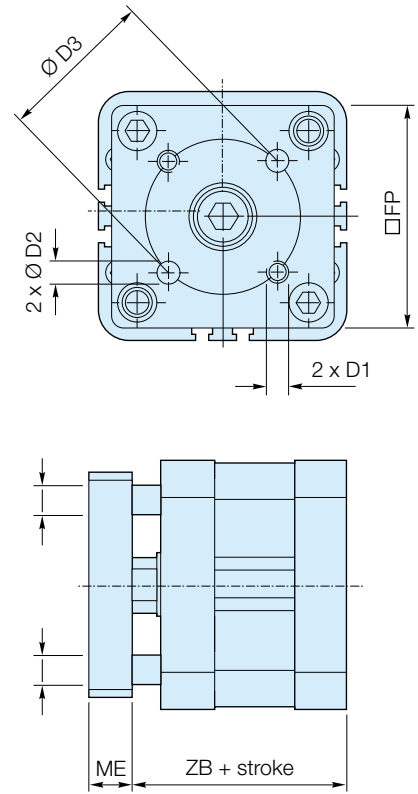
Note: Cylinders with male piston rod thread are delivered with one piston rod nut in zinc plated steel

Dimensions - Bore 80 - 100mm

P1PS...DS7G Double acting with female piston rod thread

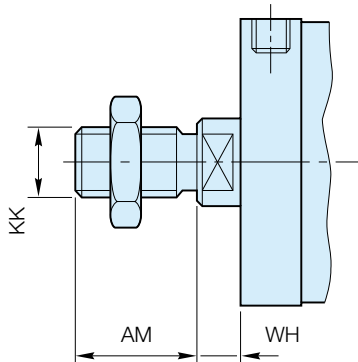


P1PG...DS Double acting with guided piston rod



| Bore size | AF | BG | ØD | D1 | ØD2 | ØD3 | EE | E | E1 | E2 | FP | G | KF | ME | N | PL | ØRR | RT | S | TG | TT | WH | ZA | ZB |
|-----------|-----|-----|----|-----|-----|-----|------|-----|------|------|-----|------|-----|----|-----|------|-----|-----|------|----|----|-------|-------|----|
| | min | min | | | H8 | | | | | | | | | | h14 | | min | | | | | ± 0,3 | ± 0,6 | |
| Ø80 | 20 | 17 | 20 | M8 | 8 | 65 | G1/8 | 96 | 48,0 | 48,2 | 90 | 17,7 | M12 | 14 | 17 | 10,5 | 8,4 | M10 | 8 | 72 | 20 | 10 | 54 | 64 |
| Ø100 | 20 | 17 | 25 | M10 | 10 | 80 | G1/8 | 115 | 57,5 | 57,7 | 110 | 23,0 | M12 | 14 | 21 | 12,0 | 8,4 | M10 | 18,5 | 89 | 24 | 10 | 67 | 77 |

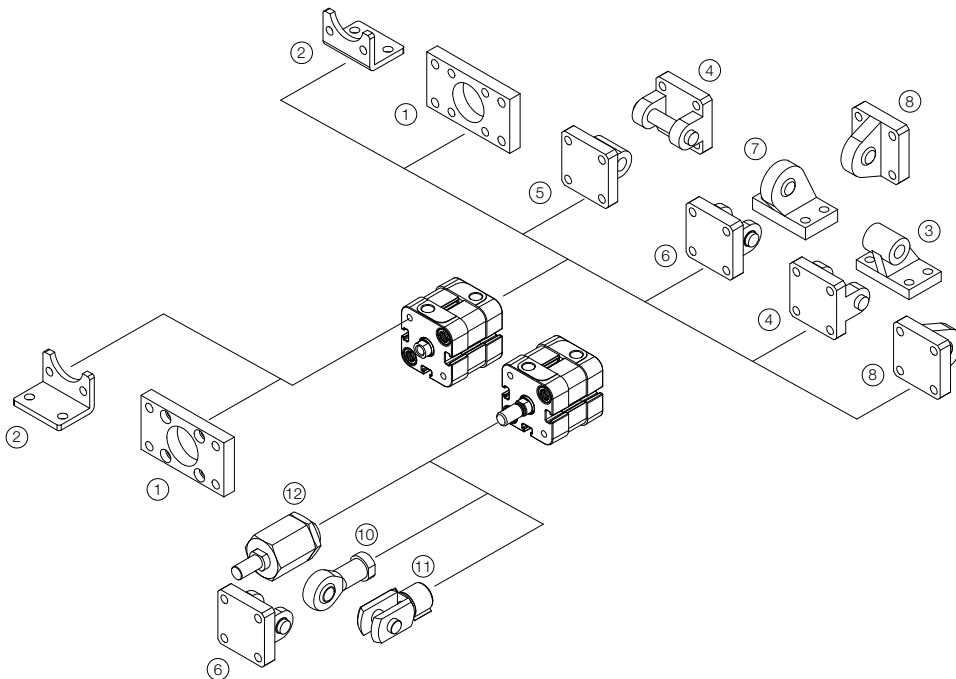
P1PS...DS8G Double acting with male piston rod thread



| Bore size | AM | WH | | KK |
|-----------|----|------|-------|-----------|
| | | nom. | tol. | |
| Ø80 | 28 | 10 | ± 1,6 | M16 x 1,5 |
| Ø100 | 28 | 10 | ± 1,6 | M16 x 1,5 |

Note: Cylinders with male piston rod thread are delivered with one piston rod nut in zinc plated steel

| | Flange MF1 / MF2 ¹ | Foot brackets MS1 ² | Pivot bracket with rigid bearing AB7 ³ | Clevis bracket MP2 ⁴ | Clevis bracket MP4 ⁵ |
|-------|---------------------------------|--|---|---------------------------------|----------------------------------|
| Ø 20 | P1P-4HMB | P1P-4HMF | | | P1P-4HME |
| Ø 25 | P1P-4JMB | P1P-4JMF | | | P1P-4JME |
| Ø 32 | P1C-4KMB | P1C-4KMF | P1C-4KMD | P1C-4KMT | P1C-4KME |
| Ø 40 | P1C-4LMB | P1C-4LMF | P1C-4LMD | P1C-4LMT | P1C-4LME |
| Ø 50 | P1C-4MMB | P1C-4MMF | P1C-4MMD | P1C-4MMT | P1C-4MME |
| Ø 63 | P1C-4NMB | P1C-4NMF | P1C-4NMD | P1C-4NMT | P1C-4NME |
| Ø 80 | P1C-4PMB | P1C-4PMF | P1C-4PMD | P1C-4PMT | P1C-4PME |
| Ø 100 | P1C-4QMB | P1C-4QMF | P1C-4QMD | P1C-4QMT | P1C-4QME |
| | Clevis bracket AB6 ⁶ | Pivot bracket with swivel bearing CS7 ⁷ | Swivel eye bracket MP6 ⁸ | 3 and 4 positions flange JP1 | Swivel rod eye AP6 ¹⁰ |
| Ø 20 | | | | | P1A-4HRS |
| Ø 25 | | | | | P1A-4HRS |
| Ø 32 | P1C-4KMCA | P1C-4KMA | P1C-4KMSA | P1E-6KB0 | P1C-4KRS |
| Ø 40 | P1C-4LMCA | P1C-4LMA | P1C-4LMSA | P1E-6LB0 | P1C-4KRS |
| Ø 50 | P1C-4MMCA | P1C-4MMA | P1C-4MMSA | P1E-6MB0 | P1C-4LRS |
| Ø 63 | P1C-4NMCA | P1C-4NMA | P1C-4NMSA | P1E-6NB0 | P1C-4LRS |
| Ø 80 | P1C-4PMCA | P1C-4PMA | P1C-4PMSA | P1E-6PB0 | P1C-4MRS |
| Ø 100 | P1C-4QMCA | P1C-4QMA | P1C-4QMSA | P1E-6QB0 | P1C-4MRS |
| | Clevis AP2 ¹¹ | Flexo coupling PM5 ¹² | Zinc-plated nut MR9 (Pack of 10 off) | | |
| Ø 20 | P1A-4HRC | P1C-4HRF | P14-4HRPZ | | |
| Ø 25 | P1A-4HRC | P1C-4HRF | P14-4HRPZ | | |
| Ø 32 | P1C-4KRC | P1C-4KRF | P14-4KRPZ | | |
| Ø 40 | P1C-4KRC | P1C-4KRF | P14-4KRPZ | | |
| Ø 50 | P1C-4LRC | P1C-4LRF | P14-4LRPZ | | |
| Ø 63 | P1C-4LRC | P1C-4LRF | P14-4LRPZ | | |
| Ø 80 | P1C-4MRC | P1C-4MRF | P14-4MRPZ | | |
| Ø 100 | P1C-4MRC | P1C-4MRF | P14-4MRPZ | | |



Cylinder mountings

Flange MF1/MF2



Intended for fixed mounting of cylinder. Flange can be fitted to front- or rear end-plates of cylinder.

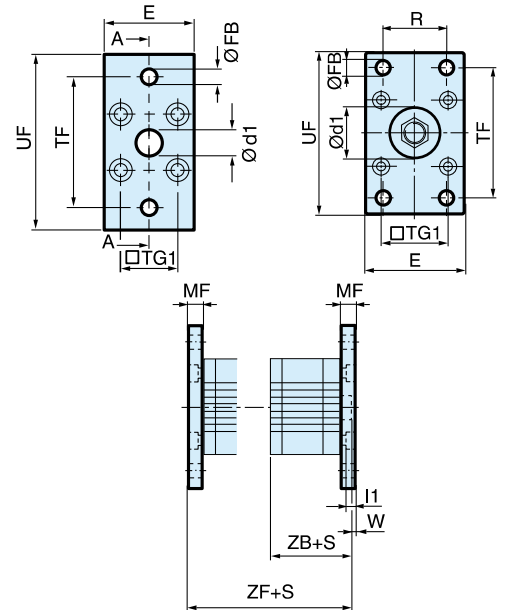
Materials
Flange: Surface-treated steel
Mounting screws according to DIN 6912: Zinc-plated steel 8.8

Supplied complete with mounting screws for attachment to cylinder.

| Cyl. bore Ø mm | Weight kg | Order code |
|-------------------|--------------|-----------------|
| 20 | 0,17 | P1P-4HMB |
| 25 | 0,20 | P1P-4JMB |
| 32 | 0,23 | P1C-4KMB |
| 40 | 0,28 | P1C-4LMB |
| 50 | 0,53 | P1C-4MMB |
| 63 | 0,71 | P1C-4NMB |
| 80 | 1,59 | P1C-4PMB |
| 100 | 2,19 | P1C-4QMB |

| Cyl. bore mm | d1 mm | FB mm | TG1 mm | E mm | R mm | MF mm | TF mm | UF mm | I1 mm | W mm | ZF* mm | ZB* mm |
|-----------------|----------|----------|-----------|---------|---------|----------|----------|----------|----------|---------|-----------|-----------|
| | H11 | H13 | | | | JS14 | JS14 | | | | -0,5 | |
| 20 | 12,0 | 6,6 | 22,0 | 36 | - | 10,0 | 55,0 | 70 | 5,4 | 4,0 | 53,0 | 43,0 |
| 25 | 12,0 | 6,6 | 26,0 | 40 | - | 10,0 | 60,0 | 76 | 5,4 | 4,0 | 55,0 | 45,0 |
| 32 | 30,0 | 7,0 | 32,5 | 45 | 32 | 10,0 | 64,0 | 80 | 5,0 | 3,0 | 61,0 | 41,0 |
| 40 | 35,0 | 9,0 | 38,0 | 52 | 36 | 10,0 | 72,0 | 90 | 5,0 | 3,0 | 52,0 | 52,0 |
| 50 | 40,0 | 9,0 | 46,5 | 65 | 45 | 12,0 | 90,0 | 110 | 6,5 | 4,0 | 65,0 | 53,0 |
| 63 | 45,0 | 9,0 | 56,5 | 75 | 50 | 12,0 | 100,0 | 120 | 6,5 | 4,0 | 69,0 | 57,0 |
| 80 | 45,0 | 12,0 | 72,0 | 95 | 63 | 16,0 | 126,0 | 150 | 8,0 | 6,0 | 80,0 | 64,0 |
| 100 | 55,0 | 14,0 | 89,0 | 115 | 75 | 16,0 | 150,0 | 170 | 8,0 | 6,0 | 93,0 | 77,0 |

S = Stroke length



Foot brackets MS1



Intended for fixed mounting of cylinder. Angle bracket can be fitted to front- and rear end-plates of cylinder.

Materials
Foot bracket: Surface-treated steel, black
Mounting screws according to DIN 912: Zinc-plated steel 8.8

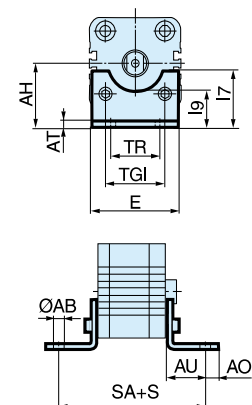
Supplied in pairs with mounting screws for attachment to cylinder.

| Cyl. bore Ø mm | Weight kg | Order code |
|-------------------|--------------|------------------|
| 20 | 0,04** | P1P-4HMF |
| 25 | 0,05** | P1P-4JMF |
| 32 | 0,06** | P1C-4KMF |
| 40 | 0,08** | P1C-4LMF |
| 50 | 0,16** | P1C-4MMF |
| 63 | 0,25** | P1C-4NMF* |
| 80 | 0,50** | P1C-4PMF |
| 100 | 0,85** | P1C-4QMF* |

** Weight per item

| Cyl. bore mm | AB mm | TG1 mm | E mm | TR mm | AO mm | AU mm | AH mm | I7 mm | AT mm | I9 mm | SA** mm |
|-----------------|----------|-----------|---------|----------|----------|----------|----------|----------|----------|----------|------------|
| | H14 | | | JS14 | | | JS15 | | | JS14 | |
| 20 | 6,6 | 22,0 | 36 | 26 | 6,0 | 16,0 | 27 | 22,0 | 4,0 | 17,0 | 69,0 |
| 25 | 6,6 | 26,0 | 40 | 26 | 6,0 | 16,0 | 30 | 23,0 | 4,0 | 19,0 | 71,0 |
| 32 | 7,0 | 32,5 | 45 | 32 | 10,0 | 24,0 | 32 | 30,0 | 4,5 | 17,5 | 92,0 |
| 40 | 9,0 | 38,0 | 52 | 36 | 8,0 | 28,0 | 36 | 30,0 | 4,5 | 18,5 | 101,0 |
| 50 | 9,0 | 46,5 | 65 | 45 | 13,0 | 32,0 | 45 | 36,0 | 5,5 | 25,0 | 109,0 |
| 63 | 9,0 | 56,5 | 75 | 50 | 13,0 | 32,0 | 50 | 35,0 | 5,5 | 27,5 | 113,0 |
| 80 | 12,0 | 72,0 | 95 | 63 | 14,0 | 41,0 | 63 | 49,0 | 6,5 | 40,5 | 136,0 |
| 100 | 14,0 | 89,0 | 115 | 75 | 15,0 | 41,0 | 71 | 54,0 | 6,5 | 43,5 | 149,0 |

S = Stroke length



Cylinder mountings

Pivot bracket with rigid bearing AB7

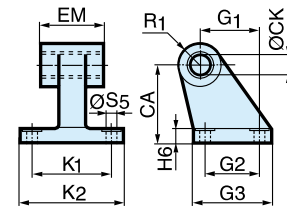
Intended for flexible mounting of cylinder. The pivot bracket can be combined with clevis bracket MP2.

Materials
 Pivot bracket: Surface-treated aluminium, black
 Bearing: Sintered oil-bronze bushing



| Cyl. bore Ø mm | Weight kg | Order code |
|-------------------|--------------|-----------------|
| 32 | 0,06 | P1C-4KMD |
| 40 | 0,08 | P1C-4LMD |
| 50 | 0,15 | P1C-4MMD |
| 63 | 0,20 | P1C-4NMD |
| 80 | 0,33 | P1C-4PMD |
| 100 | 0,49 | P1C-4QMD |

| Cyl. bore mm | CK | S5 | K1 | K2 | G1 | G2 | EM | G3 | CA | H6 | R1 |
|-----------------|----|------|------|----|------|------|------|----|------|----|----|
| | H9 | H13 | JS14 | | JS14 | JS14 | | | JS15 | | |
| 32 | 10 | 6,6 | 38 | 51 | 21 | 18 | 25,5 | 31 | 32 | 8 | 10 |
| 40 | 12 | 6,6 | 41 | 54 | 24 | 22 | 27,0 | 35 | 36 | 10 | 11 |
| 50 | 12 | 9,0 | 50 | 65 | 33 | 30 | 31,0 | 45 | 45 | 12 | 13 |
| 63 | 16 | 9,0 | 52 | 67 | 37 | 35 | 39,0 | 50 | 50 | 12 | 15 |
| 80 | 16 | 11,0 | 66 | 86 | 47 | 40 | 49,0 | 60 | 63 | 14 | 15 |
| 100 | 20 | 11,0 | 76 | 96 | 55 | 50 | 59,0 | 70 | 71 | 15 | 19 |



Clevis bracket MP2

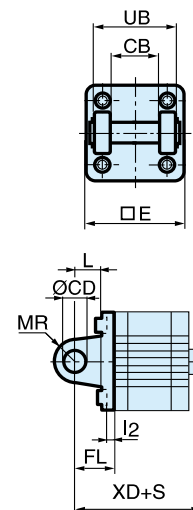
Intended for flexible mounting of cylinder. Clevis bracket MP2 can be combined with clevis bracket MP4.

Materials
 Clevis bracket: Surface-treated aluminium, black
 Mounting screws according to DIN 912:
 Zinc-plated steel 8.8
 Pin: surface treated steel



| Cyl. bore Ø mm | Weight kg | Order code |
|-------------------|--------------|-----------------|
| 32 | 0,08 | P1C-4KMT |
| 40 | 0,11 | P1C-4LMT |
| 50 | 0,14 | P1C-4MMT |
| 63 | 0,29 | P1C-4NMT |
| 80 | 0,36 | P1C-4PMT |
| 100 | 0,64 | P1C-4QMT |

| Cyl. bore mm | E | UB | CB | FL | L | l2 | CD | MR | XD* |
|-----------------|-------|-----|------|------|----|------|----|----|-------|
| | | h14 | H14 | ±0,2 | | | H9 | | |
| 32 | 45,0 | 45 | 26,0 | 22 | 13 | 5,5 | 10 | 10 | 73,0 |
| 40 | 52,0 | 52 | 28,0 | 25 | 16 | 5,5 | 12 | 12 | 77,0 |
| 50 | 65,0 | 60 | 32,0 | 27 | 16 | 6,5 | 12 | 12 | 80,0 |
| 63 | 75,0 | 70 | 40,0 | 32 | 21 | 6,5 | 16 | 16 | 89,0 |
| 80 | 95,0 | 90 | 50,0 | 36 | 22 | 10,0 | 16 | 16 | 100,0 |
| 100 | 115,0 | 110 | 60,0 | 41 | 27 | 10,0 | 20 | 20 | 118,0 |



S = Stroke length

Cylinder mountings

Clevis bracket MP4



Intended for flexible mounting of cylinder. Clevis bracket MP4 can be combined with clevis bracket MP2.

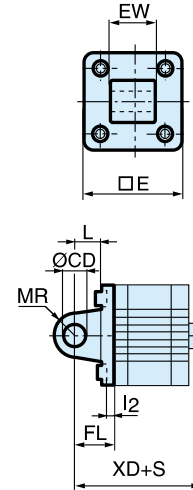
Materials
 Clevis bracket: Surface-treated aluminium, black
 Mounting screws according to DIN 912: Zinc-plated steel 8.8

Supplied complete with mounting screws for attachment to cylinder.

| Cyl. bore Ø mm | Weight kg | Order code |
|-------------------|--------------|-----------------|
| 20 | 0,04 | P1P-4HME |
| 25 | 0,05 | P1P-4JME |
| 32 | 0,09 | P1C-4KME |
| 40 | 0,13 | P1C-4LME |
| 50 | 0,17 | P1C-4MME |
| 63 | 0,36 | P1C-4NME |
| 80 | 0,46 | P1C-4PME |
| 100 | 0,83 | P1C-4QME |

| Cyl. bore mm | E mm | EW mm | FL ±0,2 mm | L mm | I2 mm | CD H9 mm | MR mm | XD*mm |
|-----------------|---------|----------|------------------|---------|----------|----------------|----------|-------|
| 20 | 34,0 | 16,0 | 20 | 14 | 2,6 | 8 | 8 | 63,0 |
| 25 | 38,0 | 16,0 | 20 | 14 | 2,6 | 8 | 8 | 65,0 |
| 32 | 45,0 | 26,0 | 22 | 13 | 5,5 | 10 | 10 | 73,0 |
| 40 | 52,0 | 28,0 | 25 | 16 | 5,5 | 12 | 12 | 77,0 |
| 50 | 65,0 | 32,0 | 27 | 16 | 6,5 | 12 | 12 | 80,0 |
| 63 | 75,0 | 40,0 | 32 | 21 | 6,5 | 16 | 16 | 89,0 |
| 80 | 95,0 | 50,0 | 36 | 22 | 10,0 | 16 | 16 | 100,0 |
| 100 | 115,0 | 60,0 | 41 | 27 | 10,0 | 20 | 20 | 118,0 |

S = Stroke length



Clevis bracket AB6



Intended for flexible mounting of cylinder. Clevis bracket GA can be combined with pivot bracket with swivel bearing, swivel eye bracket and swivel rod eye.

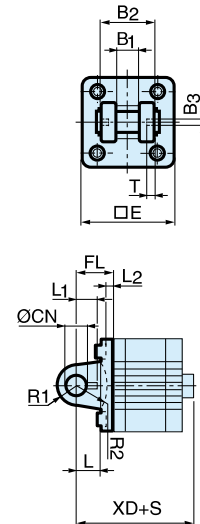
Materials
 Clevis bracket: Surface-treated aluminium, black
 Pin: Surface hardened steel
 Locking pin: Spring steel
 Circlips according to DIN 471: Spring steel
 Mounting screws acc. to DIN 912: Zinc-plated steel 8.8

Supplied complete with mounting screws for attachment to cylinder.

| Cyl. bore Ø mm | Weight kg | Order code |
|-------------------|--------------|------------------|
| 32 | 0,09 | P1C-4KMCA |
| 40 | 0,13 | P1C-4LMCA |
| 50 | 0,17 | P1C-4MMCA |
| 63 | 0,36 | P1C-4NMCA |
| 80 | 0,58 | P1C-4PMCA |
| 100 | 0,89 | P1C-4QMCA |

| Cyl. bore mm | E mm | B2 d12 mm | B1 H14 mm | T mm | B3 mm | R2 mm | L1 mm | FL ±0,2 mm | I2 mm | L mm | CN F7 mm | R1 mm | XD* |
|-----------------|---------|-----------------|-----------------|---------|----------|----------|----------|------------------|----------|---------|----------------|----------|-------|
| 32 | 45 | 34 | 14 | 3 | 3,3 | 17 | 11,5 | 22 | 5,5 | 12 | 10 | 11 | 73,0 |
| 40 | 52 | 40 | 16 | 4 | 4,3 | 20 | 12,0 | 25 | 5,5 | 15 | 12 | 13 | 77,0 |
| 50 | 65 | 45 | 21 | 4 | 4,3 | 22 | 14,0 | 27 | 6,5 | 17 | 16 | 18 | 80,0 |
| 63 | 75 | 51 | 21 | 4 | 4,3 | 25 | 14,0 | 32 | 6,5 | 20 | 16 | 18 | 89,0 |
| 80 | 95 | 65 | 25 | 4 | 4,3 | 30 | 16,0 | 36 | 10,0 | 20 | 20 | 22 | 100,0 |
| 100 | 115 | 75 | 25 | 4 | 4,3 | 32 | 16,0 | 41 | 10,0 | 25 | 20 | 22 | 118,0 |

S = Stroke length



Stainless steel Pin Set AB6

Materials
 Pin: Stainless steel
 Locking pin: Stainless steel
 Circlips according to DIN 471: Stainless steel

| Cyl. bore Ø mm | Weight kg | Order code |
|-------------------|--------------|-------------------|
| 32 | 0,05 | 9301054311 |
| 40 | 0,06 | 9301054312 |
| 50 | 0,07 | 9301054313 |
| 63 | 0,07 | 9301054314 |
| 80 | 0,17 | 9301054315 |
| 100 | 0,31 | 9301054316 |

Cylinder mountings

Pivot bracket with swivel bearing CS7

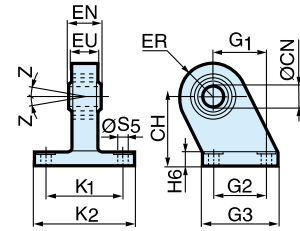


Intended for use together with clevis bracket GA.

Material
 Pivot bracket: Surface-treated steel, black
 Swivel bearing according to DIN 648K: Hardened steel

| Cyl. bore Ø mm | Weight kg | Order code |
|-------------------|--------------|-----------------|
| 32 | 0,18 | P1C-4KMA |
| 40 | 0,25 | P1C-4LMA |
| 50 | 0,47 | P1C-4MMA |
| 63 | 0,57 | P1C-4NMA |
| 80 | 1,05 | P1C-4PMA |
| 100 | 1,42 | P1C-4QMA |

| Cyl. bore mm | CN H7 | S5 H13 | K1 JS14 | K2 JS14 | EU mm | G1 JS14 | G2 JS14 | EN mm | G3 mm | CH JS15 | H6 mm | ER mm | Z mm |
|-----------------|----------|-----------|------------|------------|----------|------------|------------|----------|----------|------------|----------|----------|---------|
| 32 | 10 | 6,6 | 38 | 51 | 10,5 | 21 | 18 | 14 | 31 | 32 | 10 | 16 | 4° |
| 40 | 12 | 6,6 | 41 | 54 | 12,0 | 24 | 22 | 16 | 35 | 36 | 10 | 18 | 4° |
| 50 | 16 | 9,0 | 50 | 65 | 15,0 | 33 | 30 | 21 | 45 | 45 | 12 | 21 | 4° |
| 63 | 16 | 9,0 | 52 | 67 | 15,0 | 37 | 35 | 21 | 50 | 50 | 12 | 23 | 4° |
| 80 | 20 | 11,0 | 66 | 86 | 18,0 | 47 | 40 | 25 | 60 | 63 | 14 | 28 | 4° |
| 100 | 20 | 11,0 | 76 | 96 | 18,0 | 55 | 50 | 25 | 70 | 71 | 15 | 30 | 4° |



Swivel eye bracket MP6



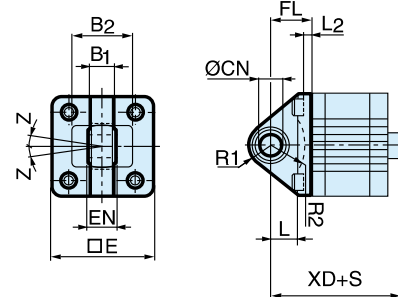
Intended for use together with clevis bracket GA

Material
 Bracket: Surface-treated aluminium, black
 Swivel bearing acc. to DIN 648K: Hardened steel

Supplied complete with mounting screws for attachment to cylinder.

| Cyl. bore Ø mm | Weight kg | Order code |
|-------------------|--------------|------------------|
| 32 | 0,08 | P1C-4KMSA |
| 40 | 0,11 | P1C-4LMSA |
| 50 | 0,20 | P1C-4MMSA |
| 63 | 0,27 | P1C-4NMSA |
| 80 | 0,52 | P1C-4PMSA |
| 100 | 0,72 | P1C-4QMSA |

| Cyl. bore mm | E mm | B1 mm | B2 mm | EN mm | R1 mm | R2 mm | FL mm | I2 mm | L mm | CN H7 | XD* mm | XD2* mm | Z mm |
|-----------------|---------|----------|----------|----------|----------|----------|----------|----------|---------|----------|-----------|------------|---------|
| 32 | 45 | 10,5 | 38 | 14 | 16 | 14 | 22 | 5,5 | 12 | 10 | 70,5 | 79,0 | 4° |
| 40 | 52 | 12,0 | 44 | 16 | 18 | 16 | 25 | 5,5 | 15 | 12 | 75,5 | 83,5 | 4° |
| 50 | 65 | 15,0 | 51 | 21 | 21 | 19 | 27 | 6,5 | 15 | 16 | 79,5 | 86,0 | 4° |
| 63 | 75 | 15,0 | 56 | 21 | 23 | 22 | 32 | 6,5 | 20 | 16 | 90,0 | 95,5 | 4° |
| 80 | 95 | 18,0 | - | 25 | 29 | - | 36 | 10,0 | 20 | 20 | 210,0 | - | 4° |
| 100 | 115 | 18,0 | - | 25 | 31 | - | 41 | 10,0 | 25 | 20 | 230,0 | - | 4° |



S=Stroke length

3 and 4 positions flange JP1

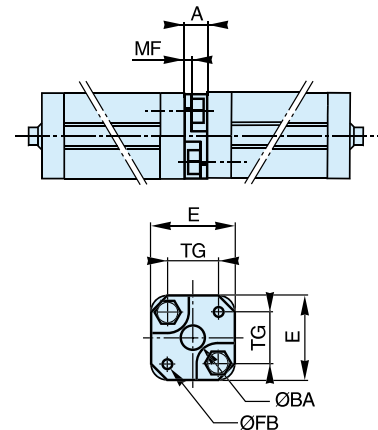


Mounting kit for back to back mounted cylinders, 3 and 4 position cylinders.

Material:
 Mounting: Aluminium
 Mounting screws: Zinc-plated steel 8.8

| Cyl. bore Ø mm | Weight kg | Order code |
|-------------------|--------------|-----------------|
| 32 | 0,060 | P1E-6KB0 |
| 40 | 0,078 | P1E-6LB0 |
| 50 | 0,162 | P1E-6MB0 |
| 63 | 0,194 | P1E-6NB0 |
| 80 | 0,450 | P1E-6PB0 |
| 100 | 0,672 | P1E-6QB0 |

| Cyl. bore mm | E mm | TG mm | ØFB mm | MF mm | A mm | ØBA mm |
|-----------------|---------|----------|-----------|----------|---------|-----------|
| 32 | 50 | 32,5 | 6,5 | 5 | 16 | 30 |
| 40 | 60 | 38,0 | 6,5 | 5 | 16 | 35 |
| 50 | 66 | 46,5 | 8,5 | 6 | 20 | 40 |
| 63 | 80 | 56,5 | 8,5 | 6 | 20 | 45 |
| 80 | 100 | 72,0 | 10,5 | 8 | 25 | 45 |
| 100 | 118 | 89,0 | 10,5 | 8 | 25 | 55 |



Piston rod mountings

Swivel rod eye AP6



Swivel rod eye for articulated mounting of cylinder. Swivel rod eye can be combined with clevis bracket GA. Maintenance-free.

Materials
Swivel rod eye: Zinc-plated steel
Swivel bearing according to DIN 648K: Hardened steel

| Cyl. bore Ø mm | Weight kg | Order code |
|-------------------|--------------|-----------------|
| 20 / 25 | 0,045 | P1A-4HRS |
| 32 / 40 | 0,08 | P1C-4KRS |
| 50 / 63 | 0,12 | P1C-4LRS |
| 80 / 100 | 0,25 | P1C-4MRS |

Stainless steel swivel rod eye AP6

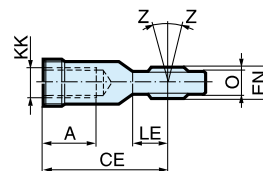
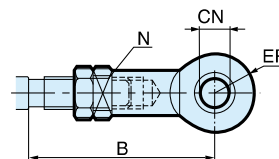


Stainless-steel swivel rod eye for articulated mounting of cylinder. Swivel rod eye can be combined with clevis bracket GA. Maintenance-free.

Materials
Swivel rod eye: Stainless steel
Swivel bearing according to DIN 648K: Stainless steel

| Cyl. bore Ø mm | Weight kg | Order code |
|-------------------|--------------|-----------------|
| 20 / 25 | 0,045 | P1S-4HRT |
| 32 / 40 | 0,08 | P1S-4JRT |
| 50 / 63 | 0,12 | P1S-4LRT |
| 80 / 100 | 0,25 | P1S-4MRT |

Use stainless steel nut with stainless steel swivel rod eye.



| Cyl. bore mm | A mm | B min max mm | B max mm | CE mm | CN H9 mm | EN h12 mm | ER mm | KK | LE mm | N min mm | O mm | Z |
|-----------------|---------|-----------------------|----------------|----------|----------------|-----------------|----------|----------|----------|----------------|---------|-----|
| 20 / 25 | 12 | 40,0 | 45 | 36 | 8 | 12 | 12 | M8x1,25 | 12 | 13 | 9,0 | 12° |
| 32 / 40 | 20 | 48,0 | 55 | 43 | 10 | 14 | 14 | M10x1,25 | 15 | 17 | 10,5 | 12° |
| 50 / 63 | 22 | 56,0 | 62 | 50 | 12 | 16 | 16 | M12x1,25 | 17 | 19 | 12,0 | 12° |
| 80 / 100 | 28 | 72,0 | 80 | 64 | 16 | 21 | 21 | M16x1,5 | 22 | 22 | 15,0 | 15° |

Clevis AP2



Clevis for articulated mounting of cylinder.

Material
Clevis, clip: Galvanized steel
Pin: Hardened steel

| Cyl. bore Ø mm | Weight kg | Order code |
|-------------------|--------------|-----------------|
| 20 / 25 | 0,045 | P1A-4HRC |
| 32 / 40 | 0,09 | P1C-4KRC |
| 50 / 63 | 0,15 | P1C-4LRC |
| 80 / 100 | 0,35 | P1C-4MRC |

Stainless steel clevis AP2

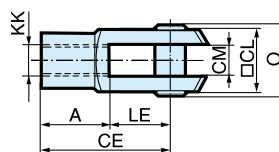
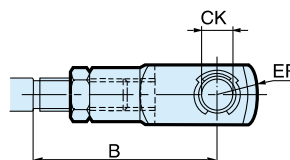


Stainless-steel clevis for articulated mounting of cylinder.

Material
Clevis: Stainless steel
Pin: Stainless steel
Circlips according to DIN 471: Stainless steel

| Cyl. bore Ø mm | Weight kg | Order code |
|-------------------|--------------|-----------------|
| 20 / 25 | 0,045 | P1S-4HRD |
| 32 / 40 | 0,09 | P1S-4JRD |
| 50 / 63 | 0,15 | P1S-4LRD |
| 80 / 100 | 0,35 | P1S-4MRD |

Use stainless steel nut with stainless steel swivel rod eye.



| Cyl. bore mm | A mm | B min max mm | B max mm | CE mm | CK h11/E9 mm | CL mm | CM mm | ER mm | KK | LE mm | O mm |
|-----------------|---------|-----------------------|----------------|----------|--------------------|----------|----------|----------|----------|----------|---------|
| 20 / 25 | 16 | 36,0 | 41 | 32 | 8 | 16 | 8 | - | M8x1,25 | 16 | 24,0 |
| 32 / 40 | 20 | 45,0 | 52 | 40 | 10 | 20 | 10 | 16 | M10x1,25 | 20 | 28,0 |
| 50 / 63 | 24 | 54,0 | 60 | 48 | 12 | 24 | 12 | 19 | M12x1,25 | 24 | 32,0 |
| 80 / 100 | 32 | 72,0 | 80 | 64 | 16 | 32 | 16 | 25 | M16x1,5 | 32 | 41,5 |

Piston rod mountings

Flexo coupling PM5



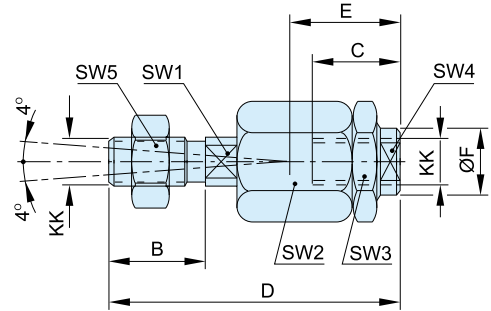
Flexo coupling for articulated mounting of piston rod. Flexo fitting is intended to take up axial angle errors within a range of $\pm 4^\circ$.

Material
Flexo coupling, nut: Zinc-plated steel

Supplied complete with galvanized adjustment nut.

| Cyl. bore Ø mm | Weight kg | Order code |
|-------------------|--------------|-----------------|
| 20 / 25 | 0,06 | P1C-4HRF |
| 32 / 40 | 0,23 | P1C-4KRF |
| 50 / 63 | 0,23 | P1C-4LRF |
| 80 / 100 | 0,65 | P1C-4MRF |

| Cyl. bore mm | KK mm | B mm | C mm | D mm | E mm | ØF mm | SW1 mm | SW2 mm | SW3 mm | SW4 mm | SW5 mm |
|-----------------|----------|---------|---------|---------|---------|----------|-----------|-----------|-----------|-----------|-----------|
| 20 / 25 | M8x1.25 | 16 | 14 | 55 | 20 | 12.4 | 7 | 17 | 17 | 10 | 13 |
| 32 / 40 | M10x1.25 | 20 | 23 | 73 | 31 | 21 | 12 | 30 | 30 | 19 | 17 |
| 50 / 63 | M12x1.5 | 24 | 23 | 77 | 31 | 21 | 12 | 30 | 30 | 19 | 19 |
| 80 / 100 | M16x1.5 | 32 | 32 | 108 | 45 | 33.5 | 19 | 41 | 41 | 30 | 24 |



Nut MR9



Intended for fixed mounting of accessories to the piston rod. Material: Zinc-plated steel

All P1D cylinders are delivered with a zinc-plated steel piston rod nut.

Supplied as pack of 10 off

| Cyl. bore Ø mm | Weight * kg | Order code |
|-------------------|----------------|------------------|
| 20 / 25 | 0,005 | P14-4HRPZ |
| 32 / 40 | 0,007 | P14-4KRPZ |
| 50 / 63 | 0,021 | P14-4LRPZ |
| 80 / 100 | 0,040 | P14-4MRPZ |

* Weight per item

Stainless steel nut MR9



Intended for fixed mounting of accessories to the piston rod.

Material: Stainless steel A2

All P1D cylinders are delivered with a zinc-plated steel piston rod nut.

Supplied as pack of 10 off

| Cyl. bore Ø mm | Weight * kg | Order code |
|-------------------|----------------|------------------|
| 20 / 25 | 0,005 | P14-4HRPS |
| 32 / 40 | 0,007 | P14-4KRPS |
| 50 / 63 | 0,021 | P14-4LRPS |
| 80 / 100 | 0,040 | P14-4MRPS |

* Weight per item

According to DIN 439 B

| Cyl. bore mm | d mm | M mm | S mm |
|-----------------|----------|---------|---------|
| 20 / 25 | M8x1,25 | | |
| 32 / 40 | M10x1,25 | 5,0 | 17 |
| 50 / 63 | M12x1,25 | 6,0 | 19 |
| 80 / 100 | M16x1,5 | 10,0 | 30 |

